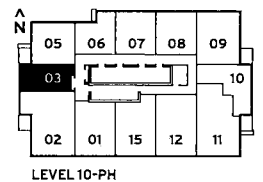
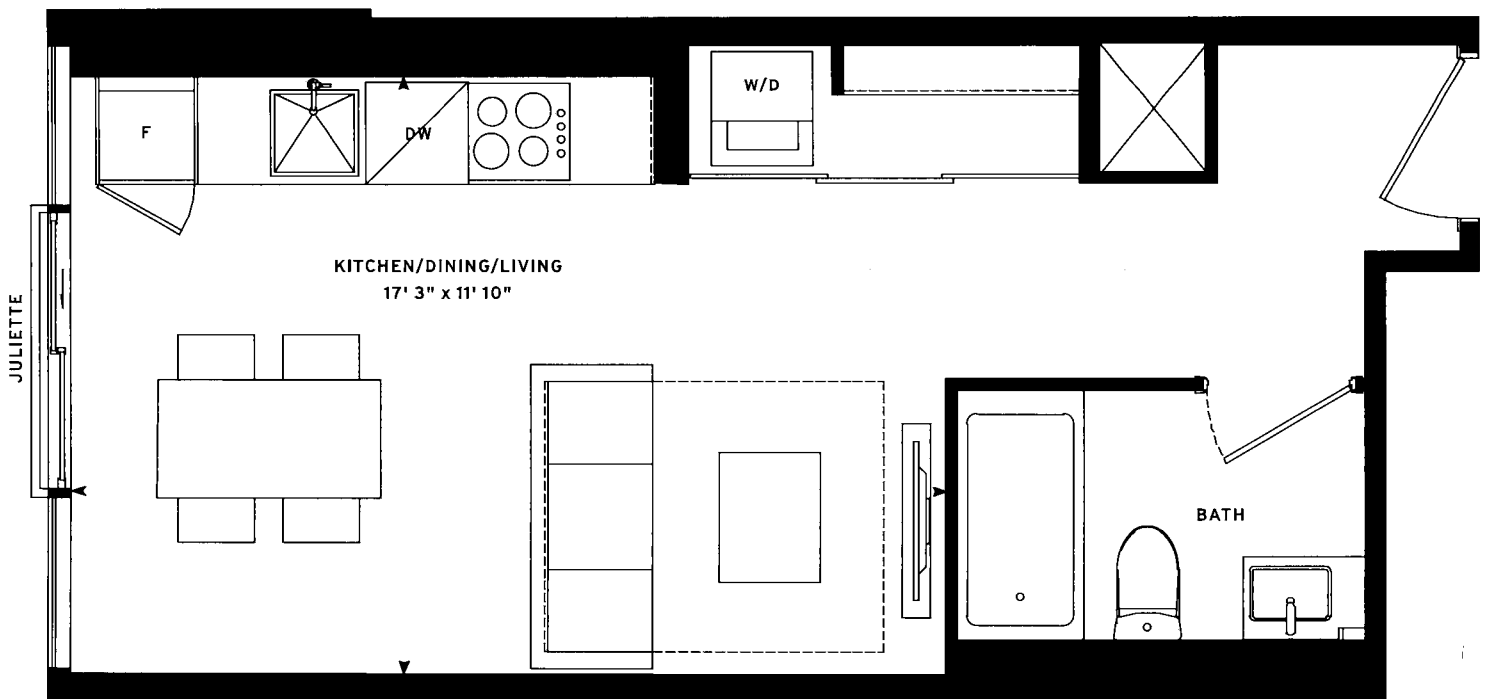


MERCER 03
STUDIO: 370 SF

Nº
555

MERCER

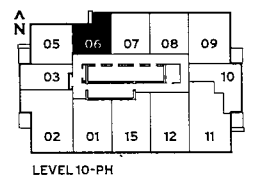
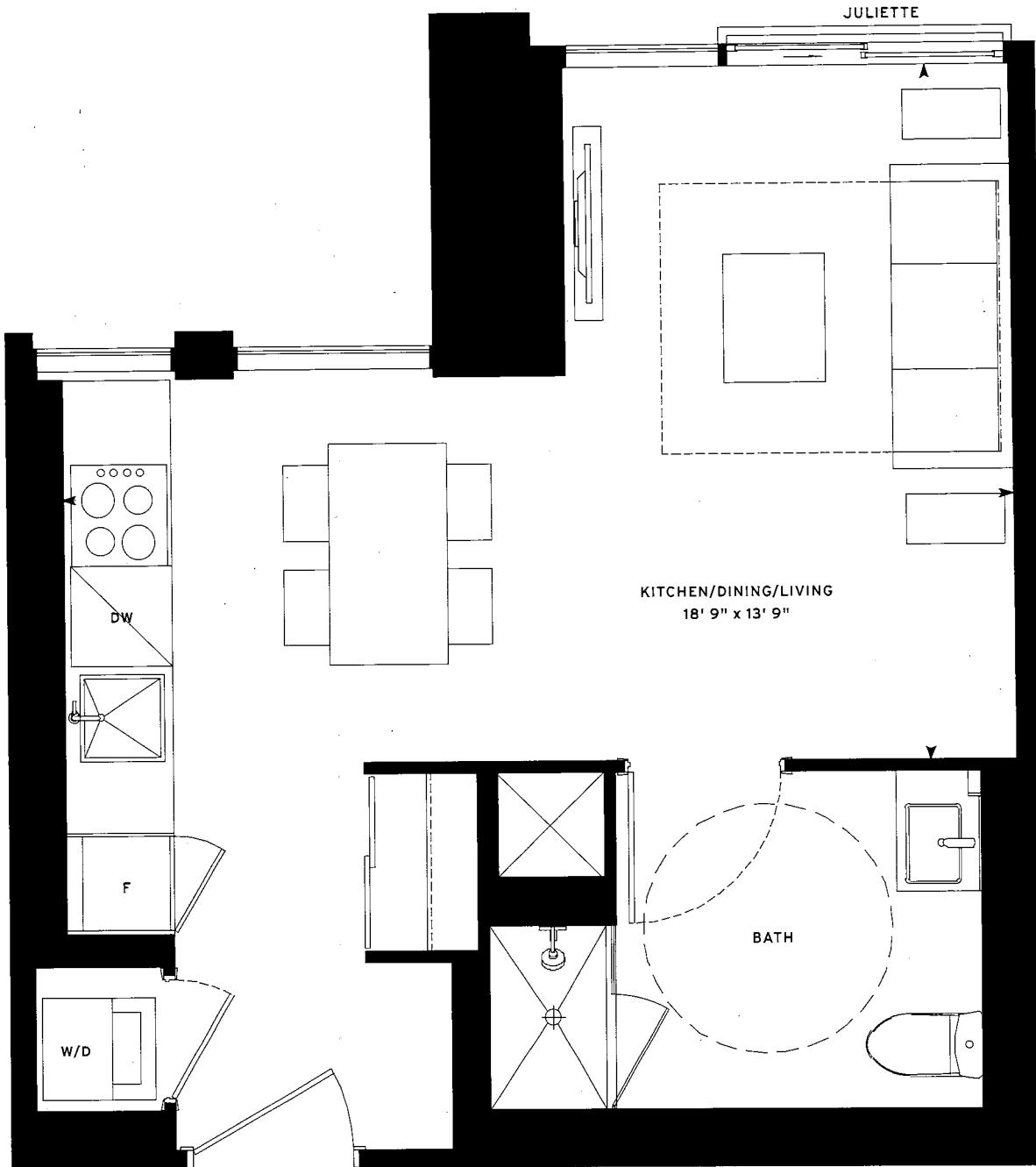


Note: All prices, figures, sizes, specifications and information are subject to change without notice. E. & O.E. All areas and stated dimensions are approximate. Actual usable floor space, living area and square footage may vary from stated floor area. All illustrations are artist's concept only. The unit shown may be the reverse of the unit purchased. Exterior building elements may be visible from within unit, including but not limited to frit patterning, mullion/metal panel placements, or other visual treatments. The purchase price does not include any furniture. © 2020 CentreCourt Developments. All rights reserved.



MERCER 06
STUDIO: 396 SF

Nº
555
MERCER

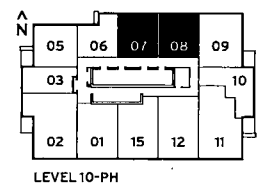
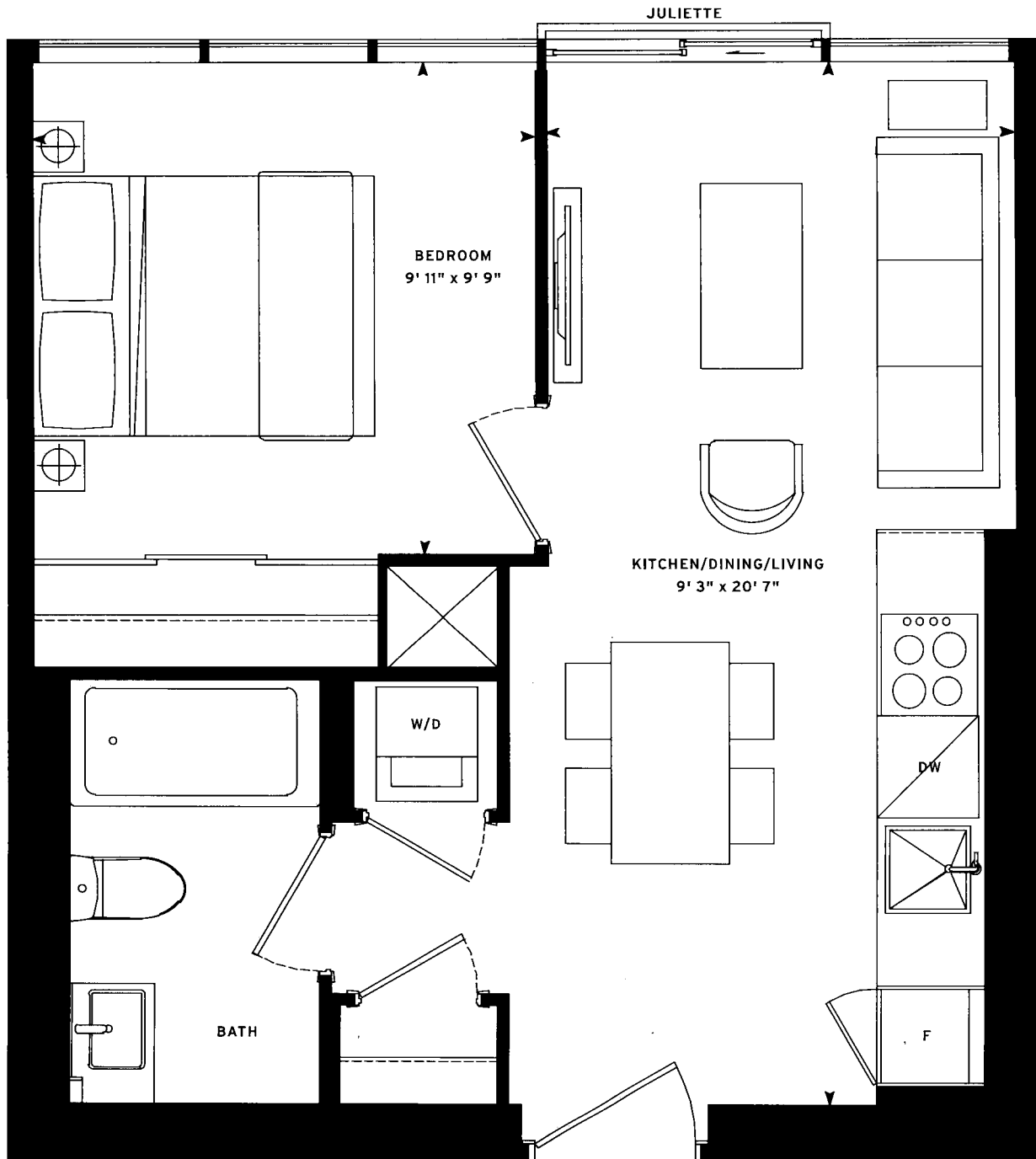


Note: All prices, figures, sizes, specifications and information are subject to change without notice. E. & O.E. All areas and stated dimensions are approximate. Actual usable floor space, living area and square footage may vary from stated floor area. All illustrations are artist's concept only. The unit shown may be the reverse of the unit purchased. Exterior building elements may be visible from within unit, including but not limited to frit patterning, mullion/metal panel placements, or other visual treatments. The purchase price does not include any furniture. © 2020 CentreCourt Developments. All rights reserved.



MERCER 07/08
1 BED: 459 SF

Nº
555
MERCER



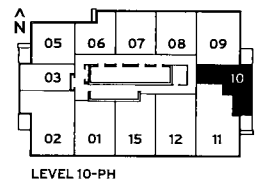
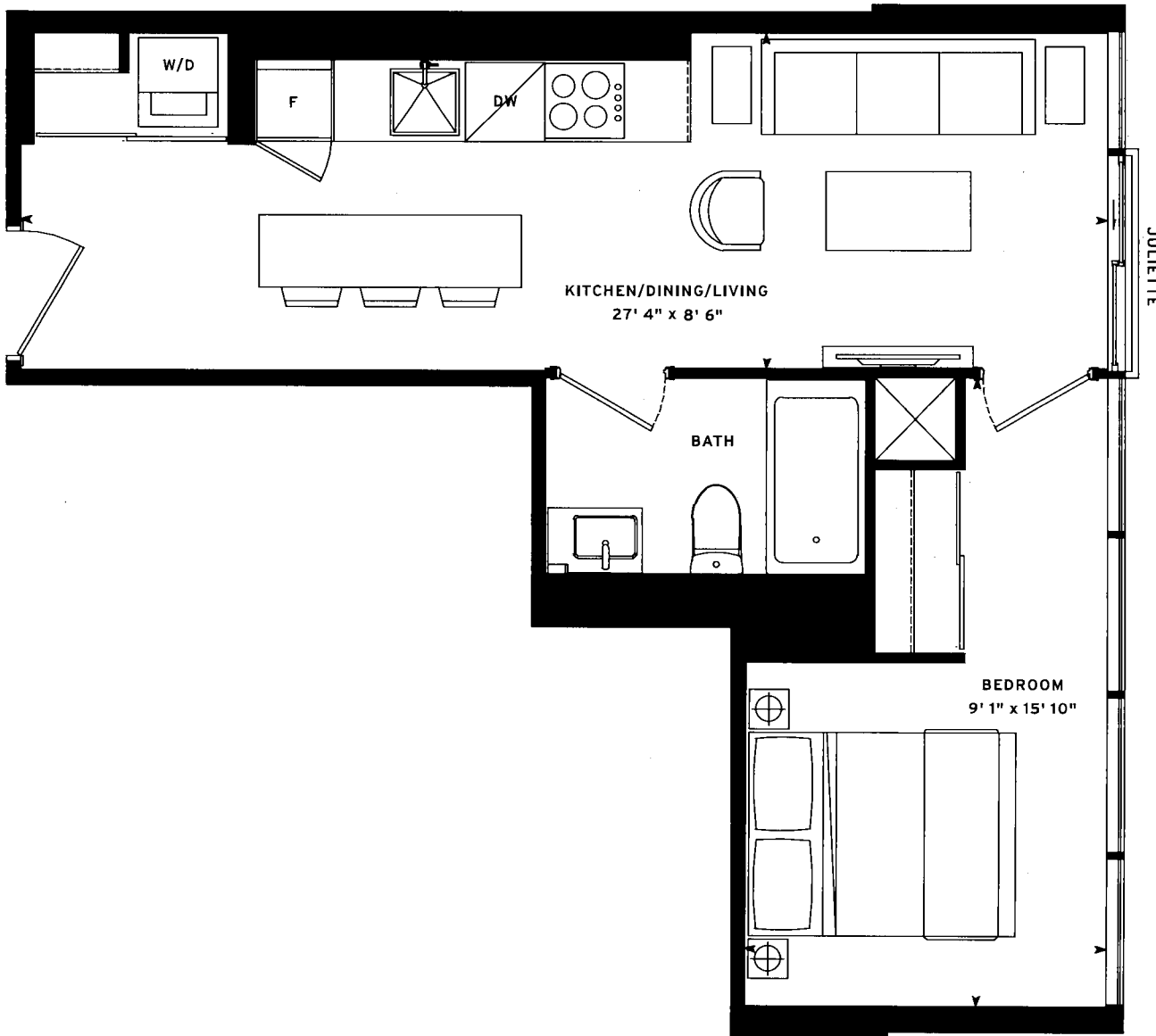
Note: All prices, figures, sizes, specifications and information are subject to change without notice. E. & O.E. All areas and stated dimensions are approximate. Actual usable floor space, living area and square footage may vary from stated floor area. All illustrations are artist's concept only. The unit shown may be the reverse of the unit purchased. Exterior building elements may be visible from within unit, including but not limited to frit patterning, mullion/metal panel placements, or other visual treatments. The purchase price does not include any furniture. © 2020 CentreCourt Developments. All rights reserved.



MERCER 10
1 BED: 463 SF

N° 555

MERCER



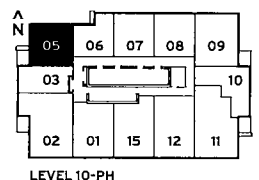
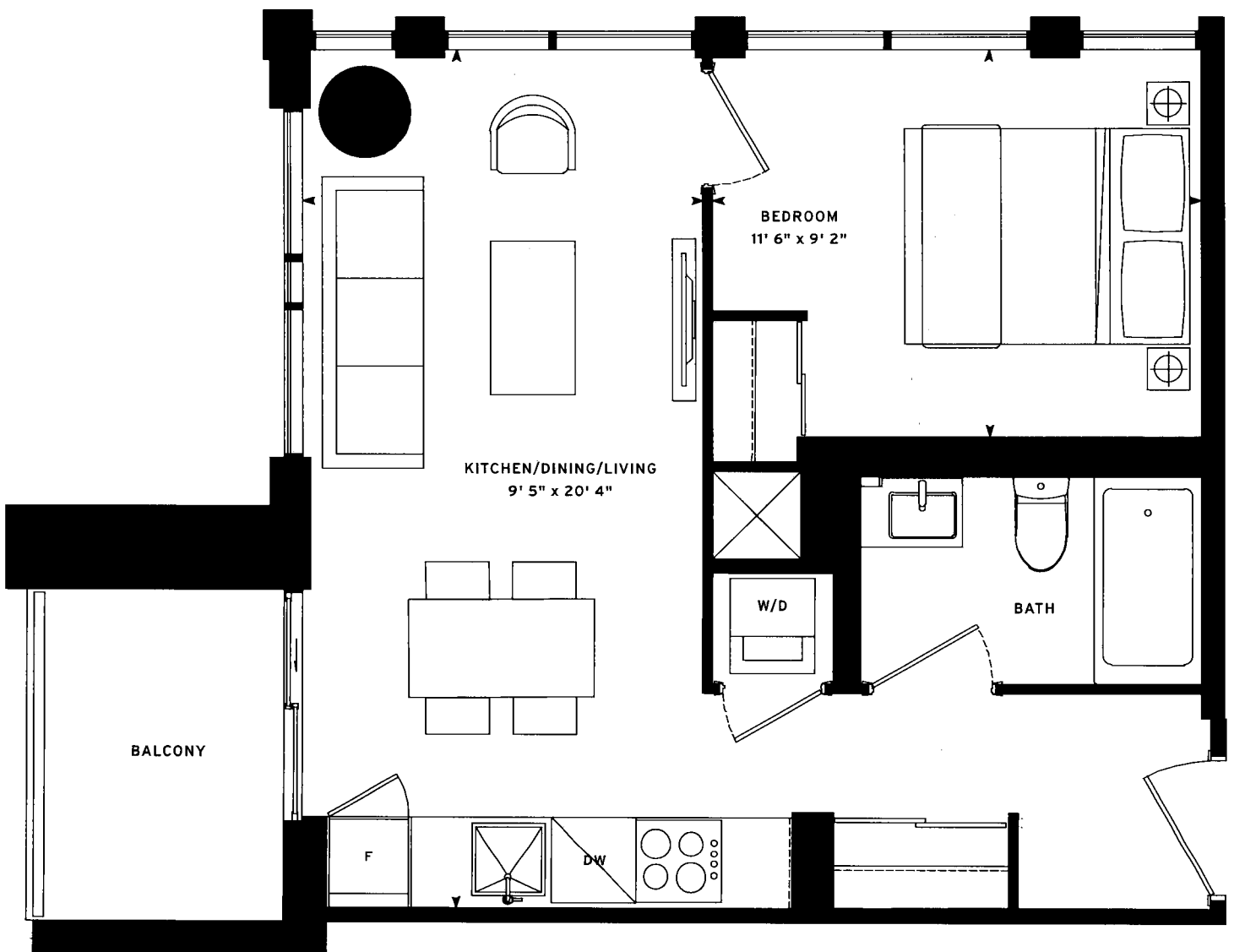
Note: All prices, figures, sizes, specifications and information are subject to change without notice. E. & O.E. All areas and stated dimensions are approximate. Actual usable floor space, living area and square footage may vary from stated floor area. All illustrations are artist's concept only. The unit shown may be the reverse of the unit purchased. Exterior building elements may be visible from within unit, including but not limited to frit patterning, mullion/metal panel placements, or other visual treatments. The purchase price does not include any furniture. © 2020 CentreCourt Developments. All rights reserved.



MERCER 05
1 BED: 479 SF

Nº
555

MERCER



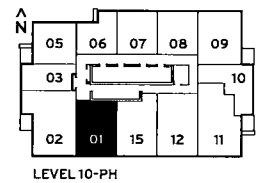
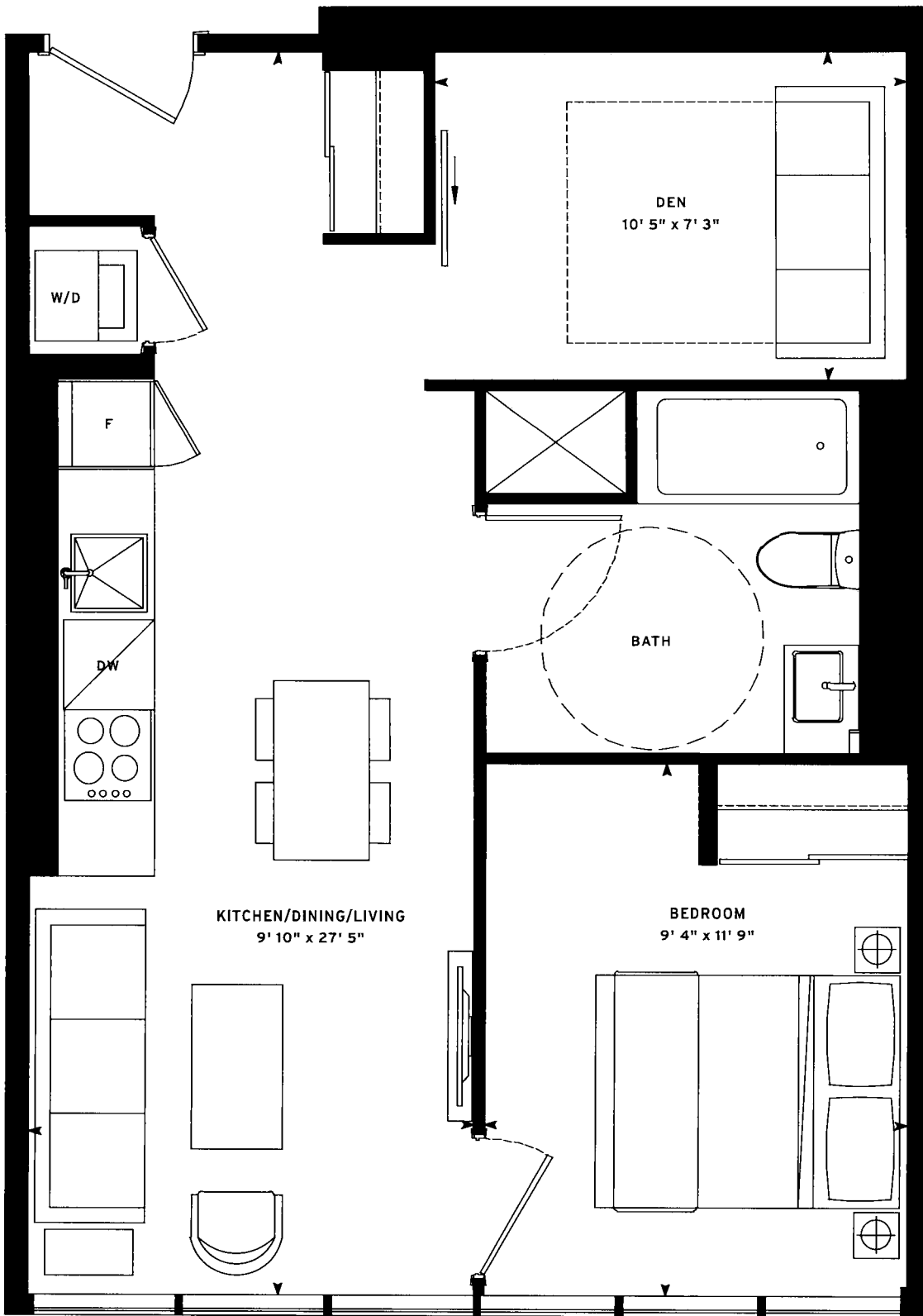
LEVEL 10-PH

Note: All prices, figures, sizes, specifications and information are subject to change without notice. E. & O.E. All areas and stated dimensions are approximate. Actual usable floor space, living area and square footage may vary from stated floor area. All illustrations are artist's concept only. The unit shown may be the reverse of the unit purchased. Exterior building elements may be visible from within unit, including but not limited to frit patterning, mullion/metal panel placements, or other visual treatments. The purchase price does not include any furniture. © 2020 CentreCourt Developments. All rights reserved.



MERCER 01
1 BED PLUS DEN: 594 SF

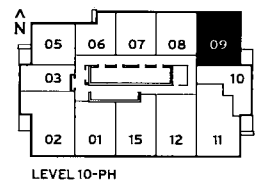
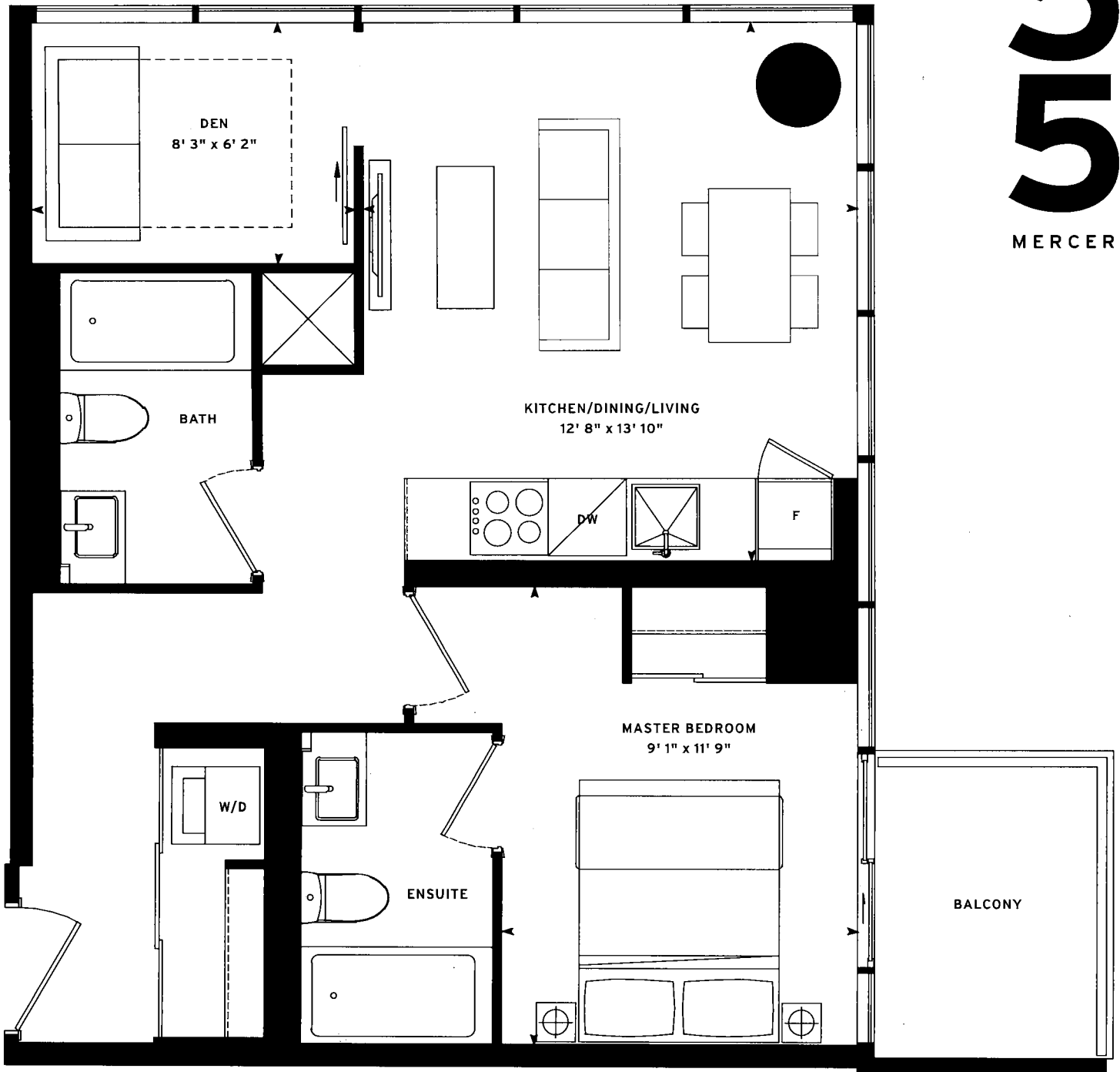
Nº
555
MERCER



Note: All prices, figures, sizes, specifications and information are subject to change without notice. E. & O.E. All areas and stated dimensions are approximate. Actual usable floor space, living area and square footage may vary from stated floor area. All illustrations are artist's concept only. The unit shown may be the reverse of the unit purchased. Exterior building elements may be visible from within unit, including but not limited to frit patterning, mullion/metal panel placements, or other visual treatments. The purchase price does not include any furniture. © 2020 CentreCourt Developments. All rights reserved.

MERCER 09
1 BED PLUS DEN: 610 SF

555 N°
MERCER

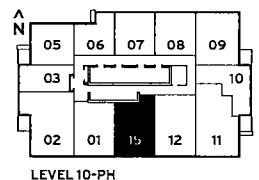
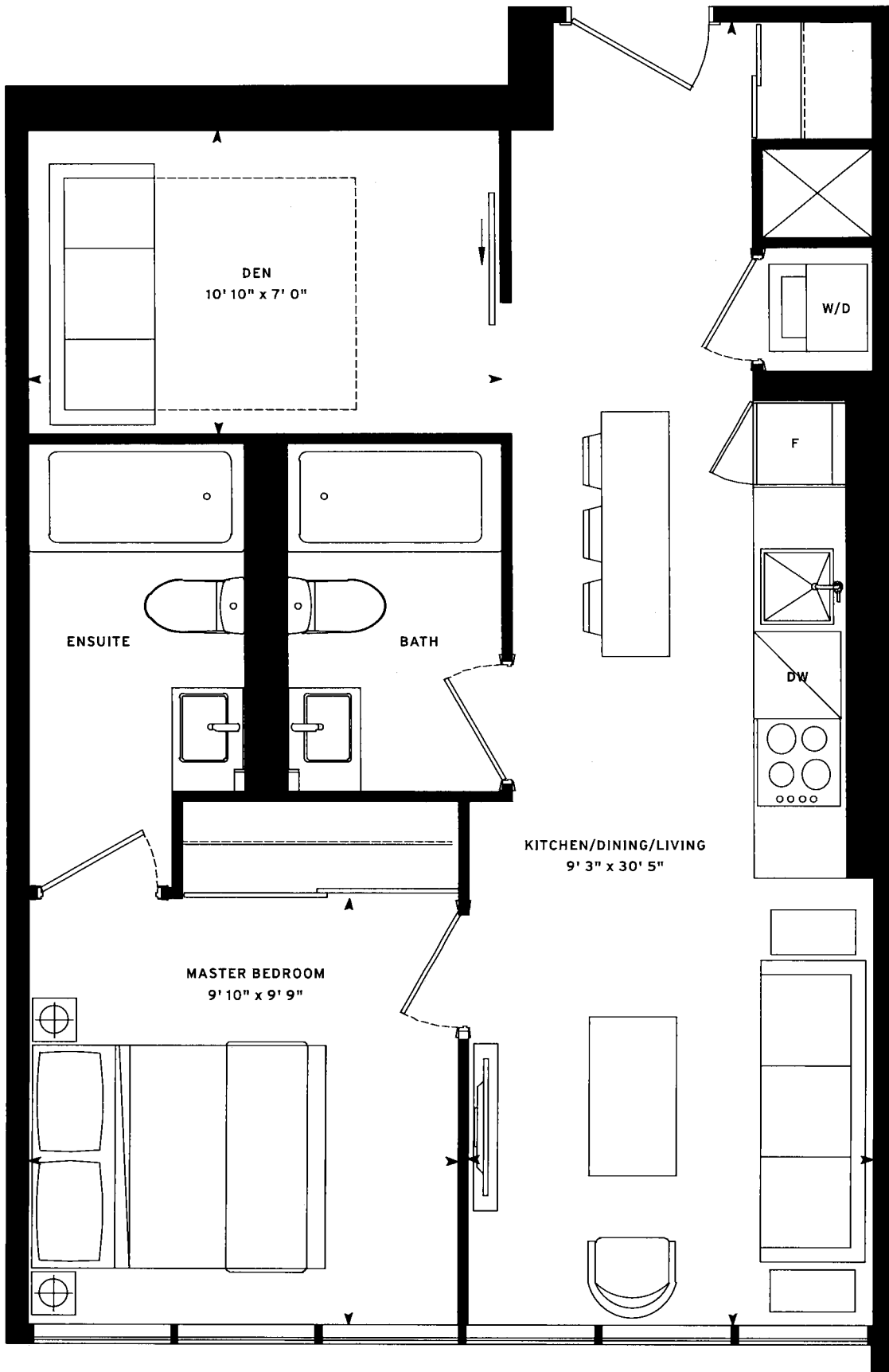


Note: All prices, figures, sizes, specifications and information are subject to change without notice. E. & O.E. All areas and stated dimensions are approximate. Actual usable floor space, living area and square footage may vary from stated floor area. All illustrations are artist's concept only. The unit shown may be the reverse of the unit purchased. Exterior building elements may be visible from within unit, including but not limited to frit patterning, mullion/metal panel placements, or other visual treatments. The purchase price does not include any furniture. © 2020 CentreCourt Developments. All rights reserved.



MERCER 15
1 BED PLUS DEN: 617 SF

N°
555
MERCER

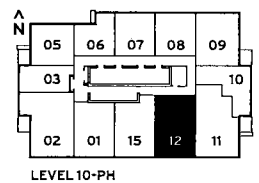
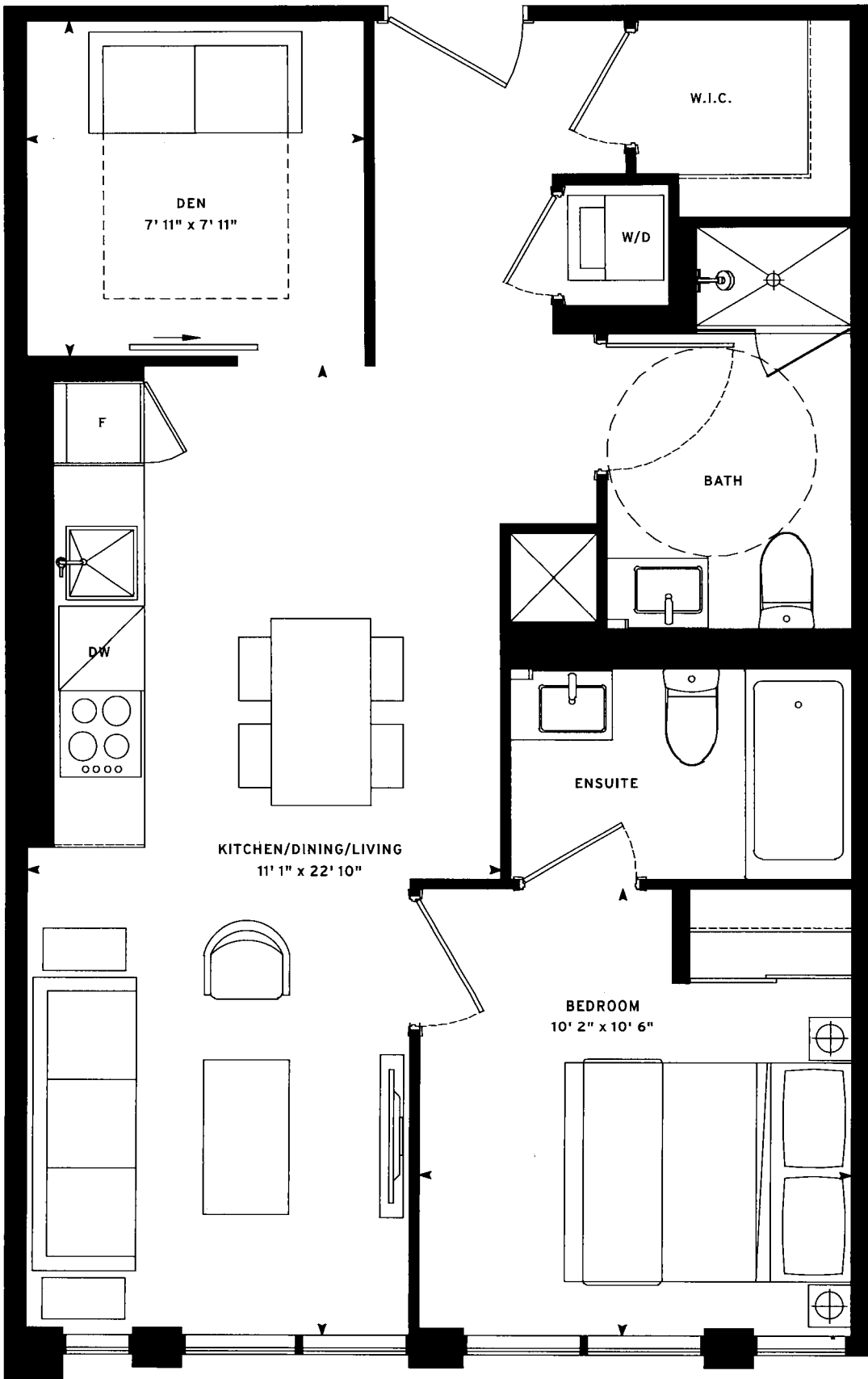


Note: All prices, figures, sizes, specifications and information are subject to change without notice. E. & O.E. All areas and stated dimensions are approximate. Actual usable floor space, living area and square footage may vary from stated floor area. All illustrations are artist's concept only. The unit shown may be the reverse of the unit purchased. Exterior building elements may be visible from within unit, including but not limited to frit patterning, mullion/metal panel placements, or other visual treatments. The purchase price does not include any furniture. © 2020 CentreCourt Developments. All rights reserved.



MERCER 12
1 BED PLUS DEN: 657 SF

N°
555
MERCER

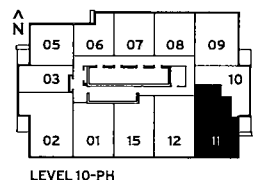
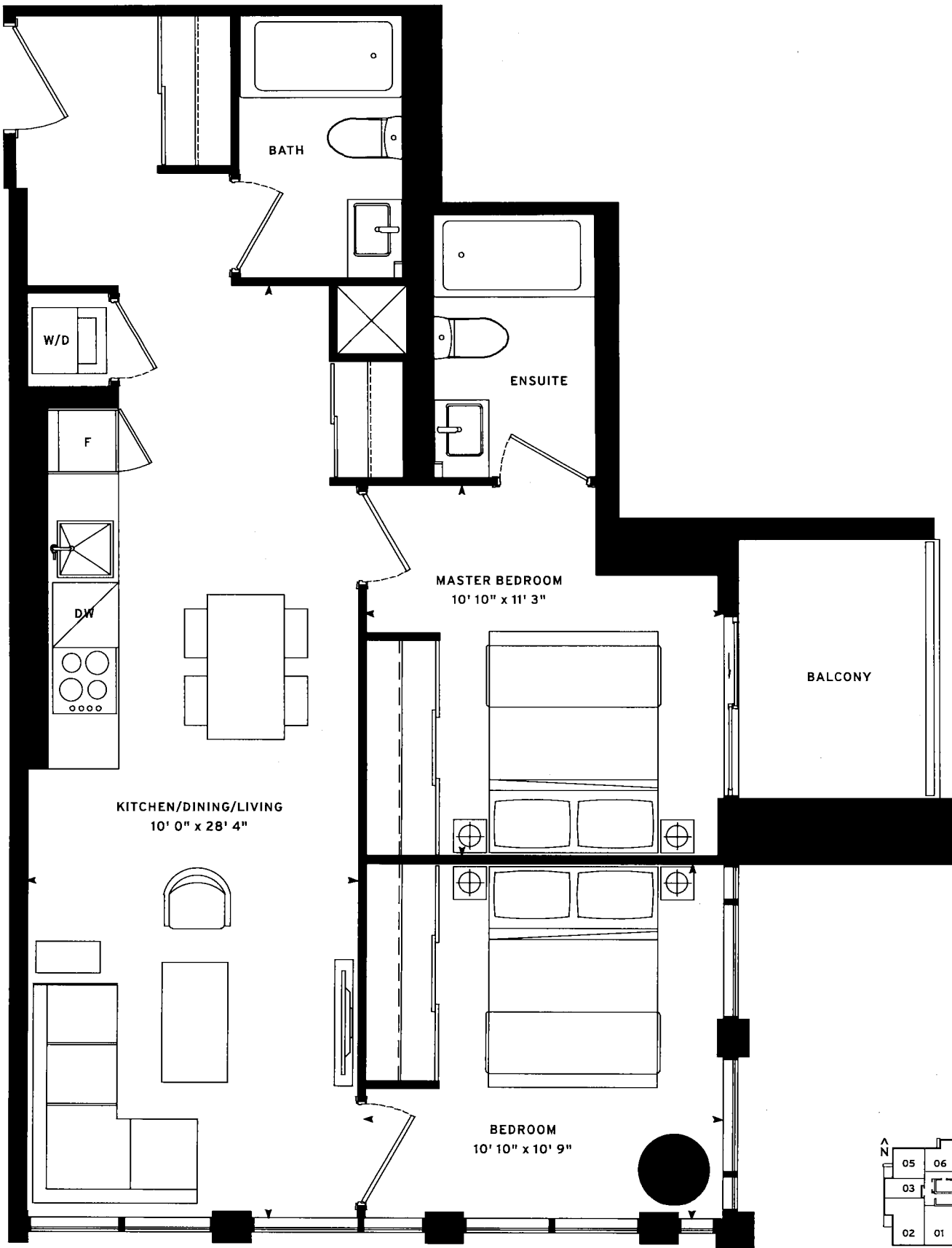


Note: All prices, figures, sizes, specifications and information are subject to change without notice. E. & O.E. All areas and stated dimensions are approximate. Actual usable floor space, living area and square footage may vary from stated floor area. All illustrations are artist's concept only. The unit shown may be the reverse of the unit purchased. Exterior building elements may be visible from within unit, including but not limited to frit patterning, mullion/metal panel placements, or other visual treatments. The purchase price does not include any furniture. © 2020 CentreCourt Developments. All rights reserved.



MERCER 11
2 BED: 741 SF

N°
555
MERCER

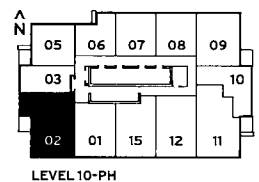
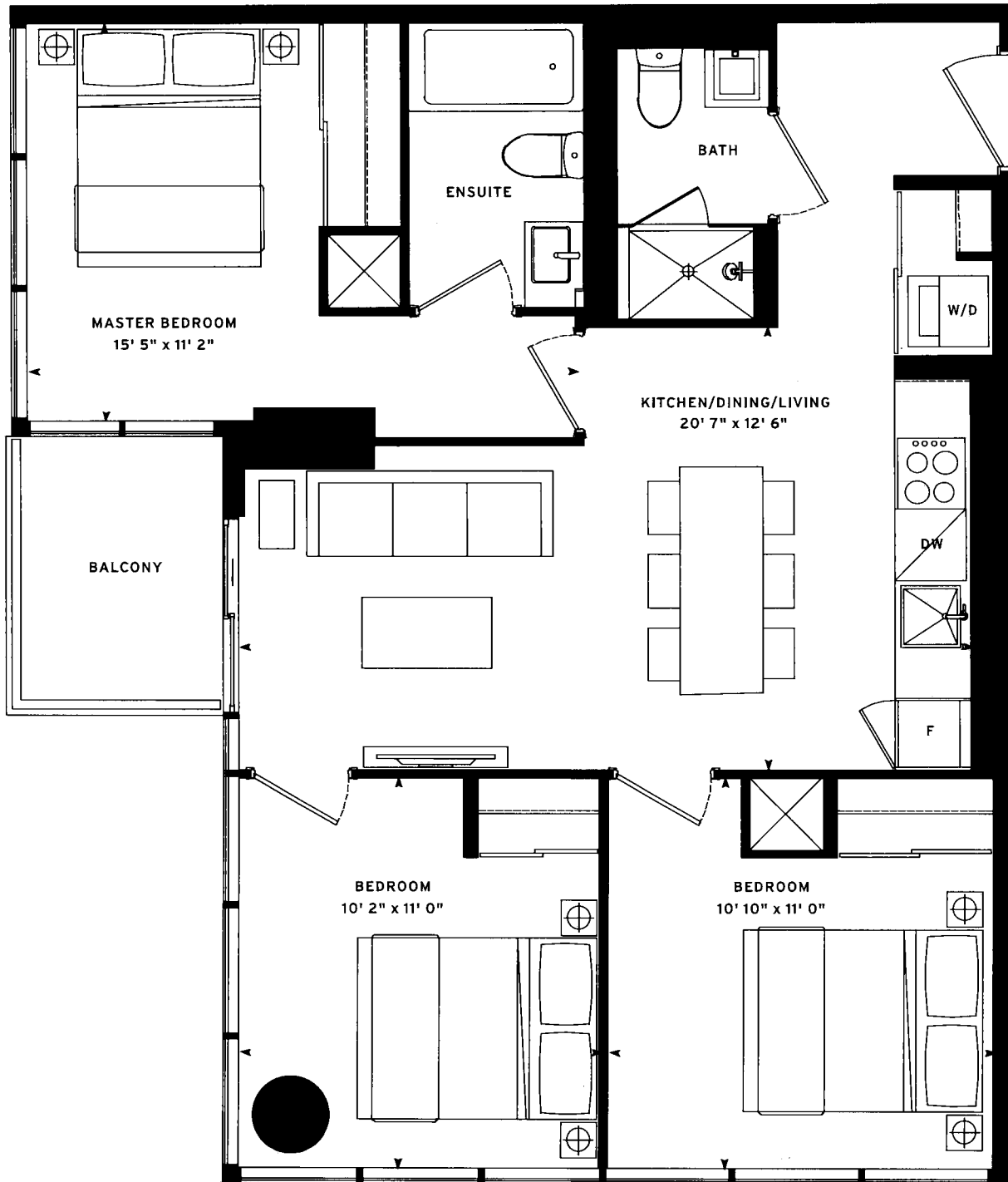


Note: All prices, figures, sizes, specifications and information are subject to change without notice. E. & O.E. All areas and stated dimensions are approximate. Actual usable floor space, living area and square footage may vary from stated floor area. All illustrations are artist's concept only. The unit shown may be the reverse of the unit purchased. Exterior building elements may be visible from within unit, including but not limited to frit patterning, mullion/metal panel placements, or other visual treatments. The purchase price does not include any furniture. © 2020 CentreCourt Developments. All rights reserved.



MERCER 02
3 BED: 821 SF

N°
555
MERCER



Note: All prices, figures, sizes, specifications and information are subject to change without notice. E. & O.E. All areas and stated dimensions are approximate. Actual usable floor space, living area and square footage may vary from stated floor area. All illustrations are artist's concept only. The unit shown may be the reverse of the unit purchased. Exterior building elements may be visible from within unit, including but not limited to frit patterning, mullion/metal panel placements, or other visual treatments. The purchase price does not include any furniture. © 2020 CentreCourt Developments. All rights reserved.

